



## Yeast Extract-NPS

Version: 07/2022  
M&S item numbers: 1081 (50 / PK) and 1081-H (100 / PK)  
Profile: Dehydrated nutrient pad sets 50 mm in petri dishes, sterile  
Color: Beige  
Storage: Dark and dry at room temperature  
Shelf life: 2 years after sterilization

### Description and application range

Yeast Extract-NPS are used for the determination of total heterotrophic colony count in all kinds of water, e.g. tap water, groundwater, waste water, sea water and mud. The formulation is according to ISO 6222:1999. It is a universal medium without any inhibitors and additives. The medium is manufactured and quality tested in compliance with ISO 11133:2014 + Amd. 1:2018 + Amd. 2:2020 standard.

### Typical composition

Enzymatic digest of casein 6.0 g/l  
Yeast extract 3.0 g/l

Final pH: 7.2 ± 0.2 at 25 °C

### Microbiological quality control

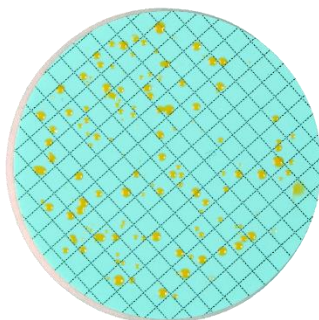
#### Bacterial contamination

Incubation: aerobically at room temperature for 3 days, specification: no growth

#### Productivity quantitative analysis

Incubation: aerobically 44 ± 4h at 36 ± 2 °C and 68 ± 4h at 22 ± 2 °C; inoculum: 50 – 120 CFU

Microorganism	Test strain	Specification	Appearance
<i>Escherichia coli</i>	WDCM 00012	$P_R \geq 0.7$	Beige colonies
<i>Escherichia coli</i>	WDCM 00013	$P_R \geq 0.7$	Beige colonies
<i>Bacillus subtilis</i>	WDCM 00003	$P_R \geq 0.7$	Beige colonies



Sample from tap water after 48 hours at 20 °C